



TimeOut

London

Art & galleries
Performing arts
Eating & drinking
Attractions
Family days out
Shops & markets
Christmas events.

SOUTH BANK & BANKSIDE

**VISIT
LONDON**

VISITLONDON.COM



Published by
Time Out Magazine Ltd
 Universal House
 281 Tottenham Court Road
 London W1T 7AB
 Tel 020 7813 3000
 Fax 020 7813 6001
 www.timeout.com

Editor Gordon Thomson

Publisher Mark Elliott

Supplement Editor

Laura Lee Davies

Sub Editors Lewis Lyons,
 Tanya Sassoon

Contributors Laura Lee
 Davies, Lewis Lyons, Fiona
 McAuslan, Kate Riordan,
 Ossian Ward

Design Lisa Buirski

Picture Research

Kim Seymour, Aimee Shirley

Group Production Director

Mark Lamond

Production Manager

Brendan McKeown

**Time Out Magazine Ltd is
 part of the Time Out Group:**

Chairman Tony Elliott

Group General Manager

Nichola Coulthard

Online Managing Director

David Pepper

Guides Managing Director

Peter Finnes

International Managing

Director Cathy Runciman

Printed by Ancient House

Printing Group, Ipswich IP2

**This is a product of Time
 Out Brand Solutions:**

Derek Pratt 020 7813 6008

Simon Best 020 7813 6309

James Caley 020 7813 6040

© Time Out Group Ltd 2008.

All rights reserved. All

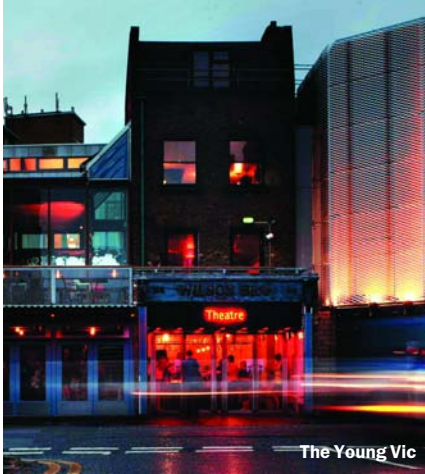
information was checked at

time of going to press.

The publisher and the organiser

cannot be held responsible for

any errors.



The Young Vic

SOUTHBANKLONDON.COM

VISIT
LONDON
 VISITLONDON.COM

Register at
visitlondon.com and
 you'll be able to take
 advantage of all our
 special offers, enter our
 fantastic competitions
 and receive our email
 newsletter, which
 contains great ideas
 about what to see and
 do in London.

Visit London
 6th Floor,
 2 More London
 Riverside,
 London SE1 2RR
0870 1 LONDON
0870 1 566366
 visitlondon.com

Contents

- 3 Getting here
- 4 Art & galleries
- 5 Architecture
- 6 Performing arts
- 7 Cinema
- 8 Attractions
- 9 Annual events
- 10 Family days out
- 11 Eating & drinking
- 11 Christmas eats
- 12 Where to stay
- 13 Enjoying the river
- 14 Shops & markets
- 15 Festive markets
- 16 Christmas shopping ideas

South Bank

Home of art and innovation



Riverside walkway

Getting here

Waterloo station is very close to the South Bank and links with major tube and rail services. Or start your visit with a stroll over the twin Golden Jubilee footbridges from Embankment tube.

The river itself is a lovely way to get here. Festival Pier (by the Royal Festival Hall) and the London Eye Millennium Pier are both used for river services.

You can't cycle along the South Bank riverside, but check www.tfl.gov.uk for routes to get around the area on bike.

Signposting and car-free promenades make exploring by foot enjoyably easy!

The wealth of heritage and innovation stretching along the Thames sums up what the South Bank is all about.

A stone's throw from the Houses of Parliament and Lambeth Palace, the South Bank area of central riverside London was energised during the 1951 Festival of Britain. The Festival gave rise to the iconic arts buildings that make up Southbank Centre: the Royal Festival Hall, The Hayward, the Purcell Room and Queen Elizabeth Hall. In the 21st century it has again been the scene of inspired design, not least in the refurbishment of Southbank Centre itself.

As you take a 'flight' on the London Eye, or enjoy a play at the renovated Young Vic, contemplate that this area, which sits in Lambeth and a sliver of Southwark, has been the scene of creative thinking for centuries. A walk along the riverside past St Thomas' Hospital, for example, is a reminder that Florence Nightingale revolutionised medical training and care here.

By contrast – enjoy the brand new: shop for one-off modern classics in the design boutiques that flourish at Gabriel's Wharf and Oxo Tower Wharf.



The Hayward

example, have a look at the forthcoming *chances4childhood* (Nov 19-Dec 7) and the history of fair trade company *Divine Chocolate* (Nov 6-9). *Oxo Tower Wharf, Bargehouse St, SE1 (020 7021 1686) Daily 11am-6pm; free*

The Hayward, Southbank Centre

The Hayward is celebrating 40 years of dynamic artistic ideas and exhibitions with a major Andy Warhol retrospective (Oct 7-Jan 18 2009). Exhibitions often include sculptures and installations dotted around the nearby surrounding spaces; 'Disposable People: Contemporary Global Slavery' is a major new photographic exhibition, running at the Royal



Bargehouse

Art & galleries

Plan ahead to make the most of the South Bank's peerless collection of art galleries and innovative spaces

Bargehouse

This large space (across from the.gallery@oxo, see below) is ripe for all kinds of different shows from fashion to exhibitions. In October (16-19) there is



**Nov 15-
Jan 10
Dazzle**

see p15

an exhibition of work by Korean artists. In November (20-23) they will host

the Ethical Christmas

Emporium (£1 entry). *Oxo Tower Wharf, Bargehouse St, SE1 (020 7021 1686). Opening times vary; free*

the.gallery@oxo

A small but innovative gallery showing new talent and design. It often addresses topical issues. For

Meet me...

at the **Mediatheque at BFI Southbank** and I won't mind if you're late. You don't need to book to watch archive movies at the viewing stations – just turn up and tune in. *Mediatheque, BFI Southbank, Belvedere Rd, SE1 (020 7928 3535) Tue 1pm-8pm, Wed-Sun 11am-8pm*

Festival Hall until Nov 9. *Belvedere Rd, SE1 (0871 663 2501). Daily (during exhibitions) 10am-6pm, Fri 10am-10pm; prices vary*

Skylark Galleries

A showcase for the work of several contemporary artists. There are regular talks exploring the pieces, you can buy works, or just browse. *Skylark 2 is on the first floor of Oxo Tower Wharf (Tue-Sun 11am-6pm). Skylark 1, Gabriel's Wharf, SE1 (020 7928 4005). Daily 11am-6pm (winter 12noon-5pm); free*

VISIT
LONDON
VISITLONDON.COM



The Hayward

Architecture *Beauty on the outside*

Whichever way you turn there's plenty of show-stopping architecture to catch your eye on the South Bank. From the dramatic and imposing Brutalism of **The Hayward** gallery to the elegant Modernism of the **Royal Festival Hall** and Art Deco glitz of **Oxo Tower Wharf** (built with windows picking out the name 'OXO' to evade stringent restrictions on billboard advertising), the variety is astounding.

Along the water there's plenty to enjoy, from the stately realm of **Blackfriars Bridge**, with its nine elliptical arches of Portland stone, to **Waterloo Bridge**, built largely by female labour during World War II. Away from the river, seek out the **Young Vic's** new, RIBA-award winning building. Not surprisingly, it was also a Stirling Prize nominee.

There's no lack of public art and sculpture either – the new brightly-coloured giant banners currently adorning the South Bank's Upper Ground are part of the **Thames Festival's Rivers of the World Project**, while others include George Vulliamy's magical Victorian **sturgeon lampstandards** lining the riverside and Bernard Schottlander's dynamic 1972 '**South Of The River**' sculpture.

The area is also rich in parks, gardens and open spaces – like **Bernie Spain Gardens** – if you want to simply kick back and enjoy the view.



War Horse

Performing arts

The South Bank's creative theatre, dance and music scene is second to none

The Old Vic

This autumn The Old Vic will present Alan Ayckbourn's comic trilogy 'The Norman Conquests', on stage for the first time in 34 years. The auditorium will be converted into a theatre-in-the-round especially for the show. There is already a buzz around the Bridge Project, directed by Sam Mendes, opening in May 2009. Simon Russell Beale and Sinead Cusack appear in 'The Winter's Tale', and a new Tom Stoppard adaptation of Chekhov's

'The Cherry Orchard' (booking from Oct). *The Cut*, SE1 (0870 060 6628)

Southbank Centre: Royal Festival Hall and Queen Elizabeth Hall

Forthcoming highlights include Shell Classic International 08/09 (until May 29 2009), the Poetry International Festival (Oct 24-Nov 1), George Piper Dances: Balletboyz (Nov 4, 5), the annual London Jazz Festival (Nov 14-23) and a new show from the creators

Christmas events

'Amazônia' (Young Vic, Nov 27-Jan 24), is a colourful spectacle all about the rainforest. Experience a **Victorian Christmas** (every weekend in Dec) at the Florence Nightingale Museum, including how to make cards and decorations. **BFI Southbank's** festive offerings are 'White Christmas' and sexy Japanese cult films. 'The Polar Express' in 3D is at **BFI IMAX**. At **Park Plaza Riverbank**, Christopher Biggins unveils Christmas trees laden with treats for a **charity auction** (Dec 17). The Southbank Centre hosts Stomp's new show '**Lost and Found Orchestra**' (Dec 19-Jan 11).

of Stomp, 'Lost and Found Orchestra' (Dec 19-Jan 11). *Belvedere Rd*, SE1 (0871 663 2500)

The Young Vic

This refurbished theatre champions young artists and directors. Current plays include the powerful drama 'In the Red and

Brown Water' and 'The Brothers Size', both by Tarell Alvin McCraney, and the Royal Exchange Theatre production of 'You Can See the Hills' (Oct 14-18). The upcoming 'Amazônia' offers a Brazilian take on Christmas (see page 6). *66 The Cut*, SE1 (020 7922 2922)

National Theatre

The current season includes a revival of Nick Stafford's adaptation of Michael Morpurgo's '**War Horse**' and a new version of '**Oedipus**', by Frank McGuinness. David Hare's eagerly anticipated drama, '**Gethsemane**', opens on November 4. Find free live music and exhibitions in the spaces around the NT, plus one-off events with directors and actors. There are now Sunday matinee shows at 3pm, until January 18. *Upper Ground*, South Bank, SE1 (020 7452 3000)



BFI Southbank

Cinema

Cinematic offerings from 3D films and blockbusters to experimental videos

BFI IMAX

See major new movies, or let the action greet you in your seat in stunning 3D. *1 Charlie Chaplin Walk*, SE1 (0870 787 2525). *Times vary*; IMAX DMR £12.50, concs £9.75, children £8. Standard prices £8.50, concs £6.25, under-15s £5, under-3s free

BFI Southbank

This venue has undergone a major refurbishment but remains true to its passion for cinema – from arthouse to Hollywood. Forthcoming highlights include the Early Chaplin season (until Oct 15), marking the BFI's 75th birthday, and the Black

Film Makers Festival (Nov). BFI Southbank is also the hub of the annual London Film Festival (this year Oct 15-30) and the London Lesbian and Gay Film Festival in March. At the BFI Southbank Gallery, check out the new installation 'The All Seeing Eye', by maverick filmmakers Michel Gondry and Pierre Bismuth at this dedicated gallery which specialises in video and new media art (until Nov 16). *Belvedere Rd*, SE1 (020 7928 3232). *Open daily 11am-11pm (film times vary)*; £8.60-£4

VISIT
LONDON
VISITLONDON.COM

SOUTH BANK



London Eye

Meet me...

on the **balcony of the OXO Tower Restaurant, Bar & Brasserie** before a shopping spree. Warm up with a hot chocolate and enjoy the panoramic views from the all-day bar. Then hit those shops! *8th Floor, Oxo Tower Wharf, Bargehouse St, SE1 (020 7803 3888)*

from Waterloo. *County Hall, Queen's Walk, SE1 (020 7967 8000). Daily 10am-6pm; £13.25, concs £11.25, children £9.75, under-3s free*

The London Eye
Take a 'flight' over London without even leaving the South



London Aquarium

created from latex gloves and crepe bandages.

St Thomas' Hospital, 2 Lambeth Palace Rd,

SE1 (020 620 0374). Daily 10am-5pm; £5.80, concs and children £4.80, family £16

London Aquarium
When you're in here, face to face with a shark, mesmerised by marine life or learning about colourful coral reefs, you're a world away

Attractions

On the river, high above it or along its banks, there is plenty to explore around this action-packed area

Florence Nightingale Museum

Set within St Thomas' Hospital, this museum tells the story of 'the lady with the lamp'. There are always lots of special events. Autumn half-term sees a variety of creative and inspirational workshops for kids, including animal mask-making for Halloween. Until January 17 there is an art installation on show: 'Miasma' by Susie MacMurray is

**Nov 21-
Dec 23
Christmas
Market
see p15**

Bank and enjoy 40km panoramic views of the city on a clear day. There are always seasonal events – like a special Halloween celebration – plus private booking options.

Beside Westminster Bridge Rd, SE1 (0870 5000 600). Open daily, Oct to May 10am-8pm, June 10am-9pm, July & Aug 10am-9.30pm, Sept 10am-9pm; £15.50, children £7.75, under-5s free, concs apply



Dan Black product designer, half of Black+Blum

Working round here is just fantastic. There is so much on offer, and so much to see walking along the river. I love mornings here – you see people rowing down the Thames. There are plenty of green spaces; Bernie Spain Gardens is a lovely place for lunch.



The Mayor's Thames Festival

London Eye River Cruise

This all-weather cruise takes in the Houses of Parliament, St Paul's Cathedral and the Tower of London. It departs from the beautiful pier at the foot of the London Eye. *London Eye Millennium Pier, SE1 (0870 5000 600). Nov-March first cruise leaves at 11.45am, then every hour thereafter until 4.45pm. April-Oct first cruise 10.45am, last cruise 6.45pm*



London RIB Voyages

Annual Events

February
Valentine's Day on the London Eye
Champagne trips.

June
Meltdown
Music festival at Southbank Centre.

June to August
Coin Street Festival
Series of family-friendly weekend events.

July to September
Watch This Space
The NT's season of free outdoor events.

September
The Mayor's Thames Festival
See Bankssee, page 7.

October
Dance Umbrella
Festival with events at Southbank Centre.

London Film Festival
The BFI's international festival of cinema.

December
New Year's Eve Fireworks
Along the riverside.



Florence Nightingale Museum

Family days out Special activities for kids

Children can get stuck into all sorts of great activities at almost every venue or attraction along the South Bank. For starters, there are daily talks and special feeding sessions at the **London Aquarium** (020 7967 8000).

There are monthly, themed **Film Fundays at BFI Southbank**, which include screenings of movies like 'Peter Pan', 'Bugsy Malone' and 'Finding Nemo'. There are also related activities to complete the family outing (020 7928 3232).

Southbank Centre (0871 663 2500) has regular classical music events for children. Upcoming highlights include the **Family Music Day** (Oct 19), and **Funharmonics** (Nov 29; March 8 and May 16 2009), when children can have a go at playing instruments, in the foyer, before a concert.

For the seriously curious, a **Backstage Tour at the National Theatre** takes you behind the scenes of the auditoriums and the workshops where sets and props are made. A family ticket (two adults and two children) is £13 (020 7452 3400).

If you want to make a weekend of it, Park Plaza County Hall (020 7021 1800) is offering **Mini-VIP Breaks** – family deals with all kinds of kids' fun activities laid on, including going on a 'Back of House' tour of the hotel.

London RIB Voyages

Don a lifejacket and whizz along the river on a breathtaking tour. Set off from the pier at the London Eye (return to Canary Wharf is 50 minutes, return to the Thames Barrier is 80).

London Eye Millennium Pier, Queen's Walk, SE1 (020 7928 8933). Times vary; £45-£32.50, children £28-£19.50



Mikala Djørup Jewellery designer

The front of the National Theatre is my favourite area. I like to sit on the terraces and have a drink. The morning is my favourite time, I like seeing people going to work and the fact that the riverside walkway is part of their commute.

VISIT
LONDON
VISITLONDON.COM



Skylon, p13

Eating & drinking

Meeting friends after work? Planning a celebration dinner or pre-theatre eats? You won't be hungry for choice here

benugo bar & kitchen @ BFI Southbank

Sausage rolls 'by the pint', coffee and cocktails, plus sit down meals.
Belvedere Rd, SE1 (020 7401 9000)

Bincho Yakitori

Authentic yakitori and kushiyaki served tapas-style.
2nd Floor, Oxo Tower Wharf, Bargehouse St, SE1 (020 7803 0858)

Concrete

This new lunch and snack spot in front of The Hayward turns into a buzzing bar after dark.

**Dec 20-23
Slow Food
Market**
see p15

The Hayward, Southbank Centre, Belvedere Rd, SE1 (020 7928 4123)

The Cut Bar & Restaurant

A menu using fresh, free-range and organic ingredients.
Young Vic, 66 The Cut, SE1 (020 7928 4400)

Christmas eats

Southbank Centre's bars and restaurants are entering into the festive spirit. **Las Iguanas** offers a South American alternative to turkey and stuffing and tickets to their New Year's Eve party are already selling fast. **Canteen's** Great British Bar has seasonal cocktails and spicy hot toddies made with Somerset cider brandy. At **Le Pain Quotidien** there are hampers on sale, along with homemade mince pies and Christmas cake.

Giraffe

A winsome kids' menu of parent-reassuring quality.
Festival Riverside, Southbank Centre, SE1 (020 7928 2004)



benugo bar & kitchen @ BFI Southbank

Where to stay

With its grand entrance, wood-panelled interior and river views, the **London Marriott Hotel County Hall** (020 7928 5200) is still redolent of County Hall's powerful past. Rooms at **Park Plaza County Hall** (020 7021 1800) are minimal and stylish, with the tapas at the **Spectrum** bar an elegant added attraction. There is the all-suite **Plaza on the River** (020 7769 2525), and the **Park Plaza Riverbank** (020 7958 8000) which is worth checking out for **Chino Latino** pan-asian restaurant and cocktail bar. **Premier Inn London County Hall** (0870 238 3300) may not claim the boutique crown but it wins on value with its comfortable en-suite rooms. Plus it's close to the area's action, so it's a handy place to base yourself.

Konditor and Cook

Legendary cakes. Try their classic lemon chiffon. *22 Cornwall Rd, SE1, (020 7261 0456)*

Le Pain Quotidien

Bites and treats served at their trademark long communal table. *Festival Terrace, Southbank Centre, SE1 (020 7486 6154)*

OXO Tower Restaurant, Bar & Brasserie

Classic dishes with a twist and fantastic views of the City of London. *8th Floor, Oxo Tower Wharf, SE1 (020 7803 3888)*

The London Marriott County Hall Restaurant

Enjoy fresh European flavours and superlative afternoon tea, with spectacular views of the Houses of Parliament. *The London Marriott Hotel*



Jo Plumb

Funki Fresh knitwear Gabriel's Wharf is the only place in London where I could have a studio shop and work like this, surrounded by like-minded designers. There's a flow of people from the Tate and the London Eye and it's amazing meeting people of so many different nationalities.

County Hall, Westminster Bridge Rd, SE1 (020 7902 8000)

Ping Pong

Fresh, handmade house dim sum, gourmet teas and a great cocktail menu. *Festival Terrace, Southbank Centre, SE1 (020 7960 4160)*

National Theatre Terrace Bar & Food

International mezze menu and a great bar. *South Bank, SE1 (020 7452 3555)*



RSJ

A great wine cellar and an imaginative and broadly French menu. *33 Coin St, SE1 (020 7928 4554)*

**Nov 20-23
Ethical
Christmas
Emporium
see p15**

Meet me...

at the **Golden Carousel** before a romantic riverside dinner date. You don't need to be a child to enjoy a dizzying spin on the Golden Carousel, right on the river. A bit of old-school charm, and it's only £2 a go. *Riverside west of Golden Jubilee Bridges*

Skylon

Stylish Skylon has three dining areas, from formal to casual, all with river views. Look out for pre- and post-theatre offers and try the cocktails. *Royal Festival Hall, SE1 (020 7654 7800)*

tamesa@oxo bar & brasserie

Tasty mains like beef carpaccio and porcini tortellini plus panoramic views across the river. *2nd Floor, Oxo Tower Wharf, SE1 (020 7633 0088)*

VISIT
LONDON
VISITLONDON.COM

Enjoying the river

Start a day out along the South Bank with a coffee and a full English breakfast wrap – signature dish of the **Riverside Café** (020 7401 7575) at Lambeth Pier, right on the river. The **London Eye Millennium Pier** (by the London Eye) and **Festival Pier** (by the Royal Festival Hall) are boarding points for scheduled river services and special cruises. For complete service information go to www.tfl.gov.uk. There are several patches of **sandy beach** revealed at low tide between the Oxo Tower and Southbank Centre – check tide tables with the Port of London Authority (www.pla.co.uk) before taking a stroll down there. Then head to the nearby **Riviera Restaurant** at Gabriel's Wharf (020 7401 7314) or one of the restaurants at Southbank Centre, to warm up and watch life float by.



Southbank Centre Shop

Shops & markets

Handmade gifts, craftsmanship, classic designs and a relaxed vibe make South Bank shopping a unique experience

aei:kei

Well priced, handprinted silks and draped jersey made into elegant and versatile pieces.

Unit 1.08, Oxo Tower Wharf, Bargehouse St, SE1 (020 7928 3555)

Black+Blum

Innovative designs, including lighting and homeware products.

Unit 2.07, Oxo Tower Wharf, Bargehouse St, SE1 (020 7633 0022)

Nov 27-
Jan 24

Amazônia
see p6

Foyles

Packed with books on all key subjects.

Festival Riverside, SE1 (020 7437 5660)

Funki Fresh

Handmade knitted fashions for day and evening wear.

BFI Filmstore

A one-stop shop for the movie fan, with DVDs, books and gifts to satisfy everyone from general browsers to academics. BFI Southbank, Belvedere Rd, SE1 (020 7815 1350)

13 Gabriel's Wharf, Upper Ground, SE1 (020 7928 1100)

Ian Bennett

Milliner Ian Bennett's clients include Alison Goldfrapp and hip labels like Boudicca.

Unit 1.11, Oxo Tower Wharf, Bargehouse St, SE1 (020 7401 3636)

Mikala Djørup

The jewellery here is all handmade on-site.

2 Gabriel's Wharf, 56 Upper Ground, SE1 (020 7021 0011)

NT Bookshop

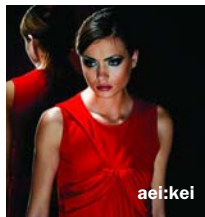
Theatre books, plays, gifts and beautifully reproduced posters.

South Bank, SE1 (020 7452 3456)

Odie and Amanda

A 1950s-style own-label range and brilliantly priced wedding dress service.

Unit 1.19, Oxo Tower Wharf, Bargehouse St, SE1 (020 7261 0505)



aei:kei

Meet me...

at the **Juice & Smoothie Bar** before exploring Gabriel's Wharf. Refresh yourself with a smoothie before browsing the quirky independent boutiques and craft shops here. Gabriel's Wharf, 56 Upper Ground, SE1

Southbank Centre Book Market

The iconic second-hand book stalls are an essential part of the South Bank experience.

Under Waterloo Bridge, Queen's Walk, SE1

Southbank Centre Shop

Gifts, homeware and books reflecting the best of new and classic design. Festival Terrace, SE1 (020 7921 0771)

W2

Cute stocking-fillers and design-led tableware are the big draw here.

Unit 1.22, Oxo Tower Wharf, Bargehouse St, SE1 (020 7922 1444)

VISIT
LONDON
VISITLONDON.COM



Christmas Market

Christmas Special festive markets

Dazzle

Nov 15-Jan 10, 10am-10pm (Sun 12noon-6pm)

The National Theatre's showcase for jewellery and hand-crafted works kicks off the Christmas shopping season with over 3,000 pieces from some of Europe's top designers.

Ethical Christmas Emporium

Nov 20-23, 11am-6pm

This market at Bargehouse, Oxo Tower Wharf features fair trade, ethical and environmental gifts. There's food and drink, plus Santa's 'green grotto'.

Southbank Centre Christmas Market

Nov 21-Dec 23, 10am-10pm

With 40 chalet stalls between Southbank Centre and London Eye, this German-style market takes in jewellery, arts and crafts, food and drink including Glühwein (mulled wine) and Bratwurst sausages, plus a merry-go-round and Christmas music.

Slow Food Christmas Market

Dec 20-23, 12noon-9pm

At Southbank Centre Square, this market brings British ham, French cheese, Italian olive oil and Middle Eastern delicacies, plus a free-range hog roast, Venezuelan chocolate shots, mulled wine and perry, with live music and Morris dancing.



Christmas shopping

Find the perfect gifts at South Bank's great permanent shops and special seasonal fairs



Clockwise from top left: Fruit Loop, Black+Blum, Oxo Tower Wharf; Andy Warhol Union Square perfume, Southbank Centre Shop; necklace, Dazzle, National Theatre; Coffee table books, BFI Filmstore; Pantone bags, W2 at Oxo Tower Wharf; Robot, and Sasha Boyo tartan necklace, both Southbank Centre Shop. For addresses see pages 14 & 15.



Look out for the snowflake icon throughout this guide for South Bank Christmas events...

