

A step-free route from Waterloo Mainline Station to the London Eye



If you need assistance at the station call 08457 484950 (it is best to phone before going).

If you are travelling on Southern Railways and need assistance call 0800 138 1016.

This journey is around 750 metres long. It should take around 10 minutes to finish.

If you have difficulty getting about it could take around 25 minutes. (These figures are estimates only)

Below each picture is a time-bar. These can show you how long you need to walk to finish the journey.

 = the length of travel for each part of the journey  = the length of travel already completed



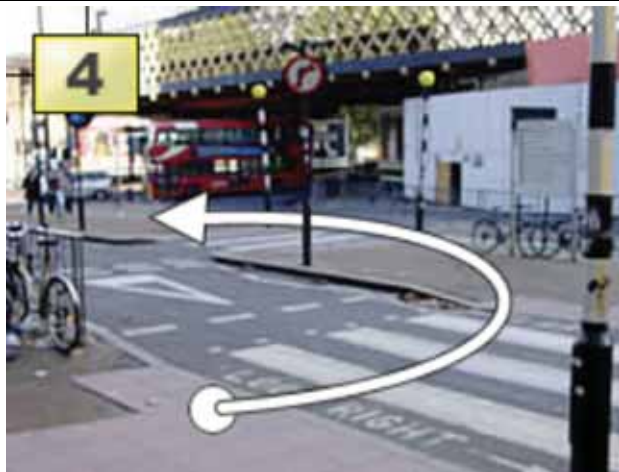
The most accessible way out of Waterloo Mainline Station is **Exit 3** (next to Costa Coffee).



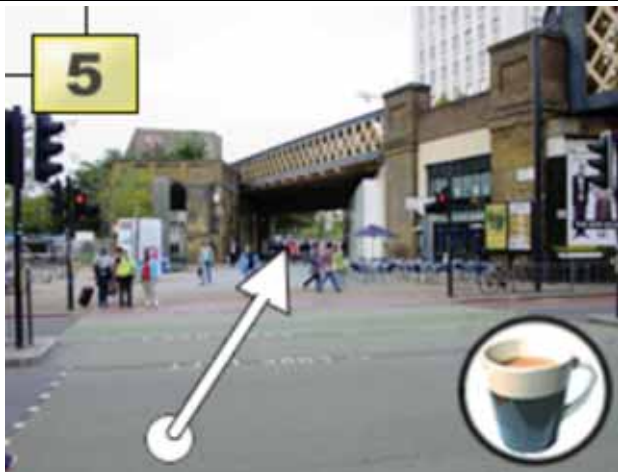
Turn **left** and walk downhill along 'Cab Road' (where the cabs and buses stop).



On your left you **pass** Waterloo Station **main entrance**. Go between the steps and the subway.



Cross at the **zebra crossing** on the right. Then **turn left** and cross at the next **zebra crossing**.



Cross at the pelican **crossing**. Straight ahead is a bridge. Go **under the bridge** (Sutton Walk).



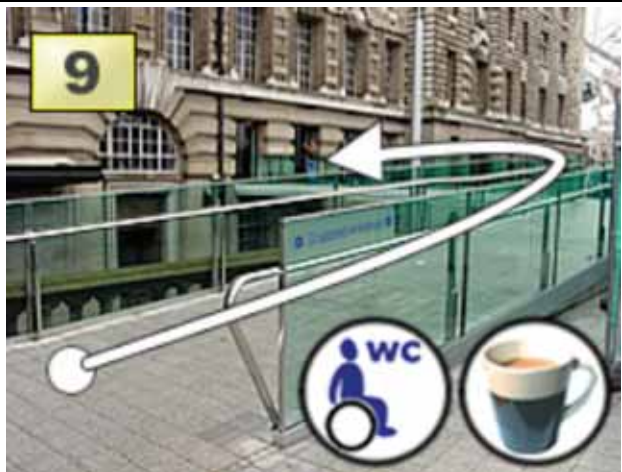
From the bridge go **straight down the road** (Concert Hall Approach). Cross at the level crossing area.



Turn **left** and go along Belvedere Road. Go **under the bridges**.








Near the end of the road is a **flat paved area** in front of the Eye. Go towards the Eye.



On the **left** is the **step-free entrance** to the Ticket Office. You can buy your ticket here.

A step-free route from Waterloo Mainline Station to the London Eye

1	 	Accessible toilet: (at Waterloo Mainline station) is next to Bonapartes Café. Press the call button to unlock it or use a RADAR key. (Floor space only 90cm x 140cm.) Waterloo Mainline station cafés: Bonapartes, Costa Coffee (☎ 020 7261 0186), Burger King (☎ 020 7261 9492).
5		Azzurro café (☎ 020 7620 1300)
9	 	Accessible toilets: 2 at the London Eye. Cafés: 2 Cafe Manga coffee shops, 1 inside the Ticket Hall and 1 outside.

The London Eye has full disabled access on the Eye (wheel), the facilities inside County Hall (ticket office, shop and café), and on their River Cruise.
There is a disabled person's booking line (☎ 0870 990 8885) where you can 'fast track' tickets to beat the queues and receive a discount on your ticket.



All details were correct at the time of completion (February 2006). Cross River Partnership, Enabled London, Tourism for All and Visit London cannot accept responsibility for any errors or omissions, or changes to access arrangements. The facilities mentioned are provided for information and are not a recommendation.