

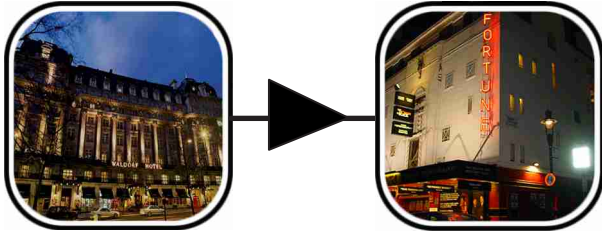
A step-free route from the Waldorf Hilton Hotel to the Fortune Theatre.

1

London Theatre Guide

London Theatre
Guide map
number:

27




This map takes you from the Waldorf Hilton Hotel to the Fortune Theatre on Russell Street.

The journey is around 250 metres long.
If you have difficulty getting about, it could take 5 minutes to finish.

Under each picture is a time-bar to show you how much of the journey there is to go.

 = the length of travel for each part of the journey.

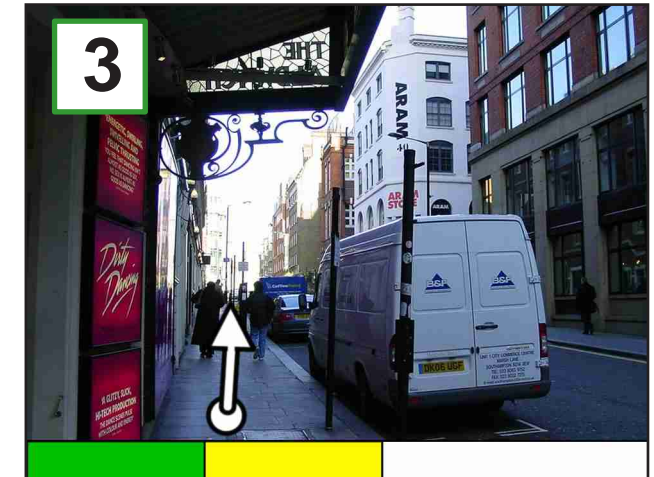
 = the length of travel already completed.



Get off the bus on the Aldwych, outside the Waldorf Hotel.



Go along the Aldwych and past bus stop E to the Aldwych Theatre



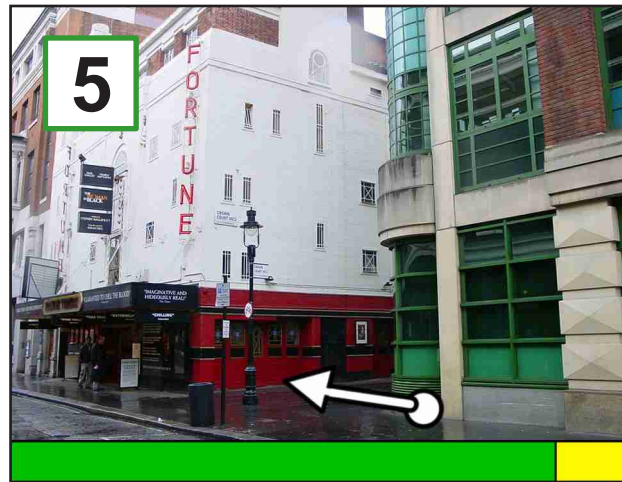
At the Aldwych Theatre turn Left and go up Drury Lane. Cross over Tavistock Street.

A step-free route from the Waldorf Hilton Hotel to the Fortune Theatre. 2

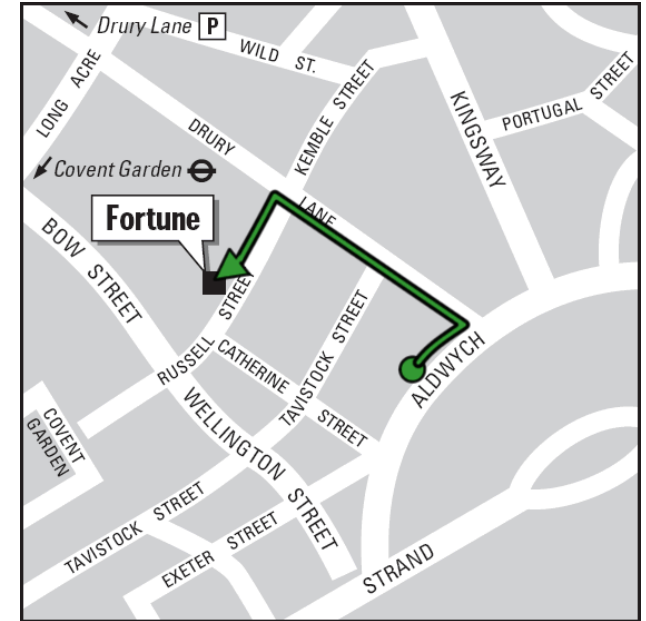
London Theatre Guide



4 Keep going up Drury Lane and cross over Russell Street.



5 Turn left and go along Russell Street to Crown Court and the Fortune Theatre.



Fortune Theatre

Russell St, London, WC2B 5HH
 Tickets online: www.officiallondontheatre.co.uk/buy



Theatre access information

Web: www.officiallondontheatre.co.uk
 Email: access@solttma.co.uk



London travel information

Web: www.tfl.gov.uk/journeyplanner
 Email: travinfo@tfl.gov.uk
 Telephone: +44 (0)20 7222 1234

Photo Access Maps created by Enabled London and commissioned by the Visitor Development and Access Initiative (Get into London Theatre), funded and supported by:



Photo Access Maps by:

