

London Film Locations

- 1 The Dorchester**
Park Lane, W1
Wimbledon (2004)
☞ Hyde Park Corner
- 2 Hyde Park Hilton**
129 Bayswater Road, W2
Frenzy (1972)
☞ Queensway
- 3 Royal Lancaster Hotel**
Lancaster Terrace, W2
The Italian Job (1969)
☞ Lancaster Gate
- 4 Selfridges**
400 Oxford Street, W1
Love Actually (2003)
☞ Marble Arch, Bond Street
- 5 Piccadilly Circus**
W1
An American Werewolf in London (1981)
☞ Piccadilly Circus
- 6 The Windmill Theatre**
17-19 Great Windmill Street, W1
Mrs Henderson Presents (2005)
☞ Piccadilly Circus
- 7 The Royal Opera House**
Bow Street, WC2
Fifth Element (1997)
☞ Covent Garden
- 8 Trafalgar Square**
WC2
Enigma (2001)
☞ Charing Cross, Leicester Square
- 9 St James's Park**
101 Dalmatians (1996)
☞ St James's Park
- 10 Westminster Abbey**
SW1
The Da Vinci Code (2006)
☞ St James's Park, Westminster
- 11 Whitehall**
SW1
V for Vendetta (2005)
☞ Charing Cross
- 12 Westminster Bridge**
SW1
28 Days Later (2002)
☞ Westminster
- 13 London Eye**
Jubilee Gardens, SE1
Thunderbirds (2004)
☞ Waterloo, Westminster
- 14 Somerset House**
Strand, WC2
Bride & Prejudice (2004)
☞ Temple, Covent Garden, Charing Cross, Embankment
- 15 Waterloo**
SE1
Waterloo Bridge (1941)
☞ Waterloo
- 16 The London Aquarium**
County Hall, Westminster Bridge Road, SE1
Closer (2004)
☞ Waterloo
- 17 South Bank**
SE1
Four Weddings and a Funeral (1994)
☞ Waterloo
- 18 The Tate Modern**
Bankside, SE1
Match Point (2005)
☞ Southwark, Blackfriars
- 19 St Paul's Cathedral**
EC4
Great Expectations (1946)
☞ St Paul's
- 20 Tower Bridge**
EC3
Alfie (1966)
☞ Tower Hill
- 21 Postman's Park**
King Edward Street, EC1
Closer (2004)
☞ Farringdon, Chancery Lane
- 22 Highgate Cemetery**
Swain's Lane, Highgate, N6
High Hopes (1988)
☞ Archway
- 23 The Salisbury**
1 Grand Parade, Green Lanes, N6
The Long Good Friday (1980)
☞ Turnpike Lane
- 24 Parliament Hill**
Hampstead Heath, NW5
The Omen (1976)
☞ Hampstead, Kentish Town
- 25 The Regent's Park (the Boating Lake)**
NW1
Brief Encounter (1945)
☞ Regent's Park, Baker Street
- 26 London Zoo**
The Regent's Park, NW1
Withnail and I (1987)
☞ Camden Town
- 27 Primrose Hill**
The Regent's Park, NW1
Bridget Jones: The Edge of Reason (2004)
☞ Chalk Farm, Camden Town
- 28 King's Cross (Battle Bridge Rd)**
NW1
Ladykillers (1955)
☞ King's Cross St Pancras
- 29 The Newman Arms**
23 Rathbone Street, W1
Peeping Tom (1960)
☞ Gooch Street, Tottenham Court Road, Oxford Circus
- 30 The British Museum**
Great Russell Street, WC1
The Mummy (1999)
The Mummy Returns (2001)
☞ Holborn, Tottenham Court Road, Russell Square, Gooch Street
- 31 Battersea Power Station**
188 Kirling Street, SW8
Sabotage (1936)
☞ Pimlico, ☞ Battersea Park
- 32 The Royal Naval College**
Greenwich, SE10
The Madness of King George (1994)
☞ Greenwich, Cutty Sark (DLR)
- 33 Maryon Park**
Maryon Road, SE18
Blowup (1966)
☞ Charlton, Woolwich Dockyard
- 34 Syon House**
Syon Park, Brentford TW8
Gosford Park (2001)
☞ Gunnersbury
- 35 Osterley Park & House**
Isleworth, TW7
Mrs Brown (1997)
☞ Osterley
- 36 West India Quay/ Isle of Dogs**
Layer Cake (2004)
☞ West India Quay
- 37 The Hackney Empire**
291 Mare Street, E8
Chaplin (1992)
☞ Hackney Central
- 38 Leadenhall Market**
EC3
Harry Potter and the Philosopher's Stone (2001)
☞ Monument, Bank
- 39 Borough Market**
Southwark Street, SE1
Lock, Stock & Two Smoking Barrels (1998)
☞ London Bridge
- 40 The Priory Church of Saint Bartholomew the Great**
West Smithfield, EC1
Shakespeare in Love (1998)
☞ Barbican, Farringdon
- 41 Wilton's Music Hall**
Graces Alley, off Ensign Street, E1
Interview with the Vampire (1994)
☞ Tower Hill, East Aldgate
- 42 Notting Hill**
W11
Notting Hill (1999)
☞ Notting Hill, Ladbroke Grove, Holland Park
- 43 The Prince Alfred**
5a Famosa Street, W9
The End of the Affair (1999)
☞ Warwick Avenue
- 44 Brompton Cemetery**
Fulham Road, SW10
Goldeneye (1995)
☞ West Brompton
- 45 Kensington Gardens**
Finding Neverland (2004)
☞ Queensway
- 46 The Science Museum**
Exhibition Road, SW7
Stormbreaker (2006)
☞ South Kensington
- 47 Powis Square**
W11
Performance (1970)
☞ Westbourne Park
- 48 Natural History Museum**
Cromwell Road, SW7
One of our Dinosaurs is Missing (1975)
☞ South Kensington
- 49 The Albert Hall**
Kensington Gore, SW7
The Ipcress File (1965)
☞ South Kensington, High Street Kensington
- 50 Linley Sambourne House**
18 Stafford Terrace, W8
A Room with a View (1985)
☞ High Street Kensington
- 51 London Underground**
Sliding Doors (1998)
☞ Fulham Broadway, Waterloo
- 52 Senate House, University of London**
Malet Street, WC1
Batman Begins (2005)
☞ Russell Square, Gooch Street



LONDON

movie map

Film London Movie Maps

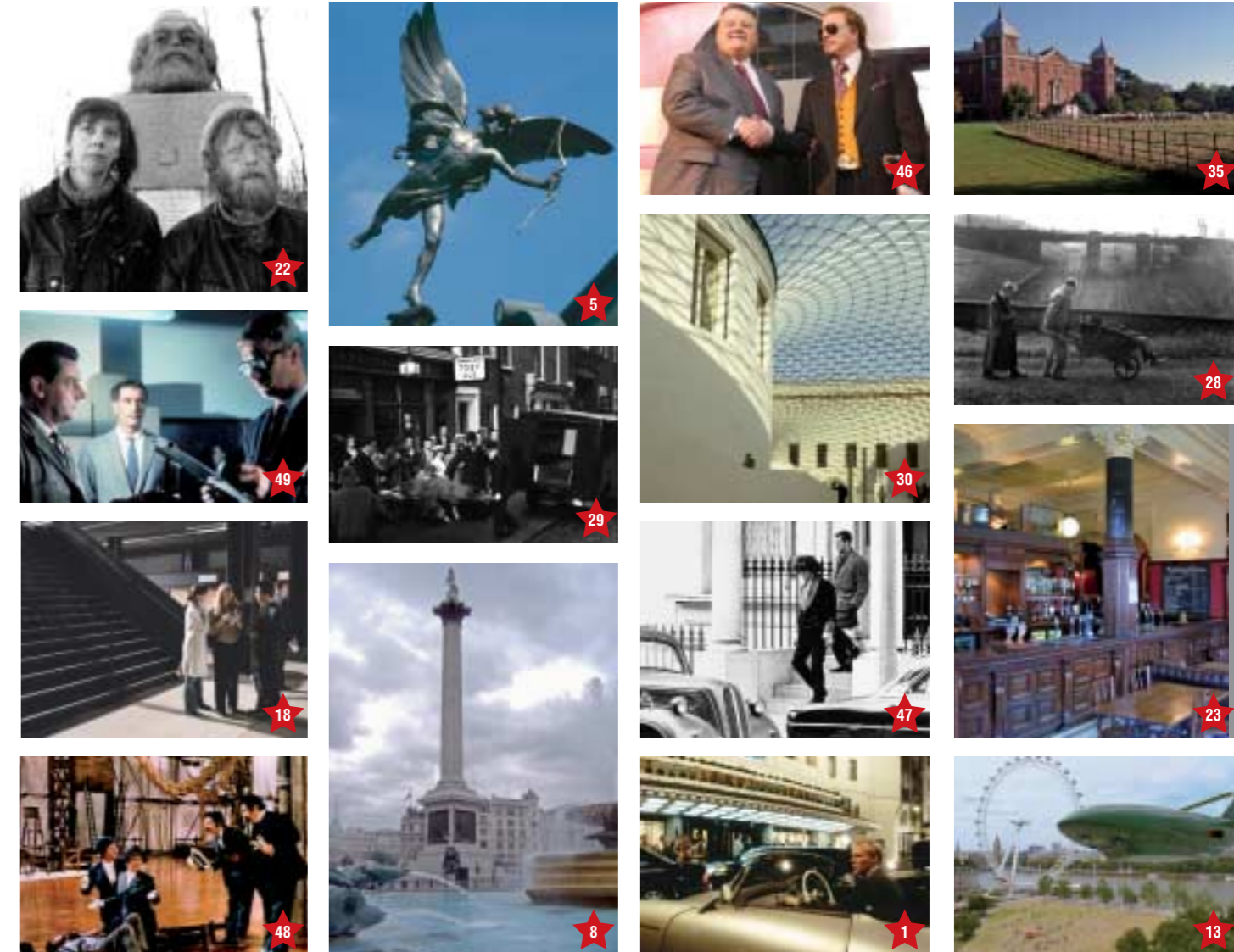
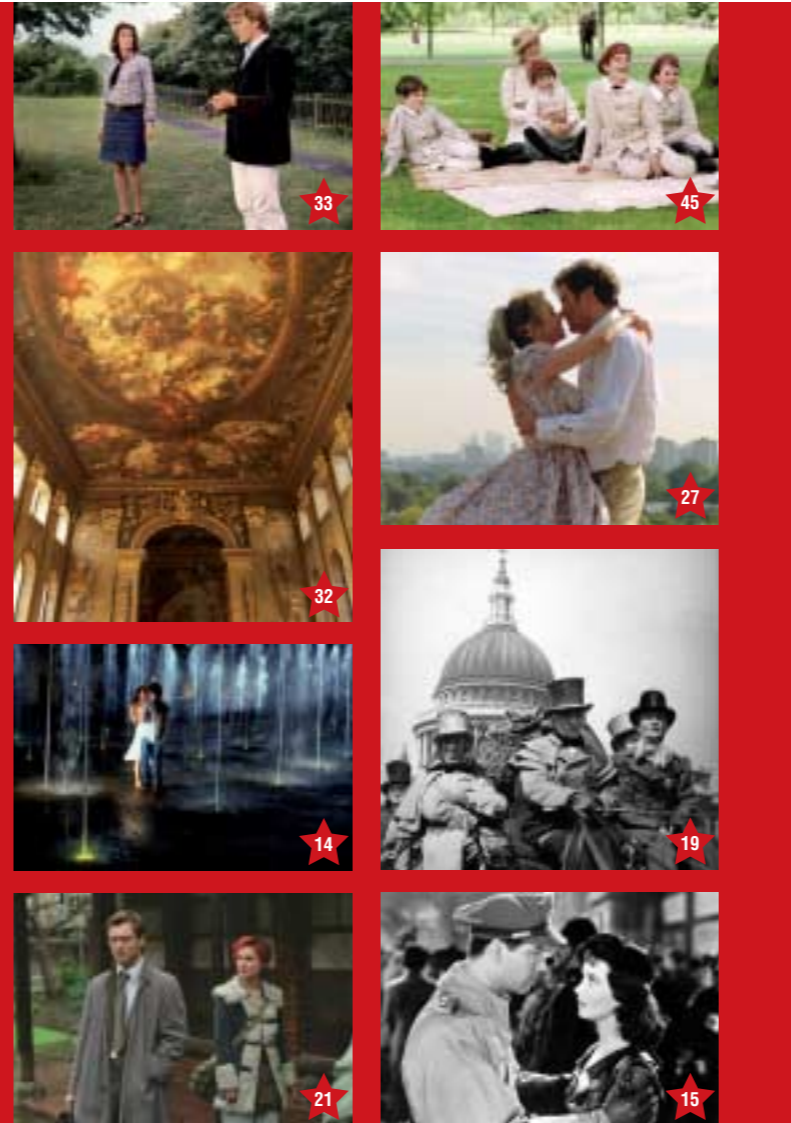
Movie Maps already produced by Film London include: *The Mother*; *Love Actually*; *Thunderbirds*; *Bridget Jones: The Edge of Reason*; *Closer* and *Match Point*. To download copies please visit www.filmlondon.org.uk/moviemaps

For more information about Film London's work across the capital, visit www.filmlondon.org.uk

Log on to visitlondon.com to get the latest information on London, to book accommodation, restaurants and entertainment and to register for free updates on great ideas for enjoying yourself in London.



Film London is supported by



London on Film

London has inspired many truly memorable movies and for more than a century has welcomed world-class film-makers to tell their stories here.

One of the most recognisable and widely used film locations in the world, the city itself has been the star of many great films from romantic comedies to action adventures, sci-fi thrillers to period dramas.

The sheer range of London films demonstrates how cinema has become part of the fabric of the city with many places now instantly associated with moments from the silver screen.

So why not visit some of the London locations featured in your favourite movies?

Film London and Visit London have joined forces to create a special London movie map. We've highlighted key central London spots featured on the big screen as well as locations further off the beaten track for those who like to explore.



With most tubes running every 5-10 minutes all week, there's no better way than the Underground to discover your favourite London movie locations.

Please visit www.tfl.gov.uk/tube for more information.

Alternatively you can pick out individual locations you particularly want to see and head straight for them. We've suggested the nearest Tube station to each destination so simply refer to the map and listings.



Photo credits: Ladykillers; Alfie; Brief Encounter; Performance; Peeping Tom; One of Our Dinosaurs is Missing; High Hopes; Waterloo Bridge; Finding Neverland; Blowup; Courtesy of The Ronald Grant Archive; Withnail and I; Courtesy of Handmade Films; Great Expectations; Courtesy of London Features International; Stormbreaker; Courtesy of Entertainment; Mrs Henderson Presents; Bride & Prejudice; Courtesy of Pathe UK; Notting Hill; Love Actually; Wimbledon; Bridget Jones; Thunderbirds; Courtesy of Universal Pictures; Closer; Courtesy of Sony Pictures; 28 Days Later; Courtesy of DNA Films; Match Point; Courtesy of Icon Film Distribution; The Ipcress File; Courtesy of Ian Rattray; British Museum image; Courtesy of London Development Agency; Osterley Park; Piccadilly Circus; The Salisbury; Trafalgar Square; Courtesy of Film London; The Painted Hall of The Royal Naval College in Greenwich; Courtesy of Jamie Lumley, Film London. While every care has been taken in the collection and preparation of the information contained in this movie map, the authors and publisher make no representation, express or implied, with regard to the accuracy of the information contained herein and cannot accept any legal responsibility or liability for any errors or omissions which may be made.

Did You Know?



- ★ In Hitchcock's *Frenzy* The Hyde Park Hilton doubled for the old Coburg Hotel, where Dick Blaney (Jon Finch) takes his girlfriend Babs Milligan (Anna Massey).
- ★ The Royal Lancaster Hotel features in *The Italian Job* as the venue for Charlie Croker's (Michael Caine) celebrations when he is released from prison.
- ★ Romantic comedy *Love Actually* shot in Selfridges department store, where one of the film's many cameo performances was given by Rowan Atkinson as Rufus, a jewellery salesman.
- ★ The climactic end to John Landis' horror *An American Werewolf in London* was shot over two nights in Piccadilly, with the authorities being persuaded to shut the area down to allow for the rampage between beast and London traffic!
- ★ In *Mrs Henderson Presents* Laura Henderson (Judi Dench) buys an old London theatre and opens it up as The Windmill, a performance hall which goes down in history for, among other things, its all-nude revues. The venue continues the tradition to this day.
- ★ The Royal Opera House is home to the Royal Opera and the Royal Ballet and features in *Fifth Element* as The Phlostoin Paradise Opera House, in which the blue alien sings.
- ★ The opening and closing scenes of *Enigma*, set in World War II, were shot in Trafalgar Square and featured Thomas

- Jericho (Dougray Scott) seeing Claire (Saffron Burrows) for the first time since her mysterious disappearance.
- ★ The live-action version of *101 Dalmations* made use of St James's Park for the frantic chase scene, ending with the dogs' masters falling into the lake and then falling in love.
- ★ In their search for the tomb of Sir Isaac Newton, *The Da Vinci Code's* Robert Langdon (Tom Hanks) and Sophie Neveau (Audrey Tatou) rushed past actual London tourists who were used as extras in the film. The tomb is in Westminster Abbey.
- ★ During the shooting of *V for Vendetta* film-makers transformed Whitehall for the largest location shoot the city has seen for years. 1000 people worked through the night to shoot scenes involving tanks, troops and masked revolutionaries descending upon the capital.
- ★ In *28 Days Later* Jim (Cillian Murphy) walks past an overturned London bus on Westminster Bridge. This scene was achieved in less than 20 minutes by placing the bus on its side and removing it when the shot was finished.
- ★ The British Airways London Eye opened in 1999 and is the largest observation wheel in the world. In *Thunderbirds* International Rescue's Thunderbird 2 soars over the Thames and lands next to the London Eye, taking in spectacular views of the city on its way.
- ★ *Bride & Prejudice's* Punjabi wedding song and dance number was set on the fountains at Somerset House and took six days to shoot.
- ★ In *Four Weddings and a Funeral* Charles (Hugh Grant) declares his love to Carrie (Andie MacDowell) on the South Bank.
- ★ In Woody Allen's *Match Point* the scenes set in the Tate Modern's Turbine Hall were shot on location. However the following scenes set in the gallery space were in fact shot in Atlantis Gallery in East London's Truman Brewery.
- ★ In Lewis Gilbert's *Alfie*, Ruby (Shelley Winters) and Alfie (Michael Caine) have their first encounter on Tower Bridge when, working as a tourist photographer, Alfie snaps her.
- ★ Postman's Park features in *Closer* as the location where Alice (Natalie Portman) and Dan (Jude Law) begin to fall in love. It is a small, pretty park with a wall dedicated as a national memorial to heroic men and women who died whilst trying to save the lives of others.
- ★ Highgate Cemetery is a Grade II listed park boasting fine examples of Victorian architecture as well as being home to the grave of Karl Marx, a monument visited by Cyril (Philip Davis) and Shirley (Ruth Sheen) in Mike Leigh's *High Hopes*.
- ★ Fagan's Pub at the start of *The Long Good Friday*, was set in Belfast but was in fact shot in The Salisbury.

- ★ David Lean was the first British director to be nominated for an Oscar® with classic romantic tear-jerker *Brief Encounter*. The scene in the film where Dr Alec Harvey (Trevor Howard) and Laura Jesson (Celia Johnson) go boating was shot on the lake in The Regent's Park.
- ★ London Zoo was used as a location in *Withnail and I* when Withnail (Richard E Grant) takes a final stroll with Marwood (Paul McGann) before delivering a soliloquy from Hamlet outside the wolf enclosure. The wolf enclosure is no longer there as the animals outgrew their space and were moved to Whipsnade Wild Animal Park - you can now find squirrel monkeys and anteaters in their place!
- ★ The opening sequence of *Bridget Jones: The Edge of Reason* was shot on Primrose Hill, located on the north side of The Regent's Park. During the scene Bridget (Renée Zellweger) runs into the arms of Mark Darcy (Colin Firth) to 'The Sound of Music'.
- ★ The Newman Arms is a small family-run pub in the heart of Fitzrovia. In *Peeping Tom* it is the location where psychotic photographer Mark Lewis (Carl Boehm) films the murders.
- ★ *The Mummy* and *The Mummy Returns* were both shot on location inside The British Museum which, among its vast array of exhibits, houses the world-renowned Rosetta Stone.
- ★ The bell-ringing concert scene in *The Madness of King George* was shot in The Painted Hall of The Royal Naval College in Greenwich.
- ★ The scene of the alleged murder in Michelangelo Antonioni's *Blowup* was shot in Maryon Park which has changed very little since the film was shot.
- ★ *Mrs Brown* is the true story of the grieving Queen Victoria (Judi Dench) and her relationship with her servant John Brown (Billy Connolly). The film was shot partly at Osterley Park & House, a spectacular National Trust location in the heart of West London.
- ★ The Leaky Cauldron in J.K. Rowling's *Harry Potter* series is a pub which can only be seen by witches and wizards. The location used for the entrance to this magical pub is Bull's Head Passage in Leadenhall Market.
- ★ The Church of St Bartholomew the Great is a small Anglican church situated in Smithfield. It is here that William Shakespeare (Joseph Fiennes) begs for forgiveness after hearing about the murder of Kit Marlowe (Rupert Everett) in John Madden's multi award-winning film *Shakespeare in Love*.
- ★ Notting Hill has been home to Portobello Road market since the 19th Century. In the film *Notting Hill* the location used as William Thacker's (Hugh Grant) house with its infamous blue door was once the home of the film's director Richard Curtis.

- ★ *Goldeneye* was the first Bond film to star Pierce Brosnan. The exterior shots for the scene where Natalya (Izabella Scorupco) hides inside the church in St Petersberg were actually filmed outside the chapel in Brompton Cemetery.
- ★ In *Finding Neverland* JM Barrie (Johnny Depp) meets the Llewelyn-Davies family in Kensington Gardens where a statue of Peter Pan, commissioned by the author, sits in the gardens today.
- ★ Action-adventure film *Stormbreaker* moved into The Science Museum for four days to use the 'Making the Modern World' area for several scenes in the film's finale.
- ★ *One of our Dinosaurs is Missing* is a classic British comedy about the theft of a dinosaur from the Natural History Museum - although the museum scenes were actually filmed in Elstree and Pinewood studios!
- ★ The London Underground is the world's oldest underground railway system. In *Sliding Doors* the scenes where Helen's (Gwyneth Paltrow) fate is decided by whether or not she makes it through the sliding doors of the Tube were shot at Waterloo and Fulham Broadway stations.